



LABMAN

Visiting Labman

We look forward to welcoming you.

Getting Here



Labman Automation Ltd.
Seamer Hill, Seamer
Stokesley
North Yorkshire
TS9 5NQ
UK



what3words: **perch.octopus.offshore**



Most international flights travel via London Heathrow or Manchester. From London there are connecting flights to Newcastle or Leeds Bradford Airport, from which it is a 1.5 hour taxi to Labman. The drive from Manchester to our HQ takes around 2.5 hours.



The nearest railway stations are Northallerton, Yarm and Eaglescliffe.



From the South on the A1(M)

- Take junction 49 towards (A19) Teesside.
- In 21 miles, take A172 towards Stokesley.
- After 8 miles, take a slight left onto Thirsk Road/B1365.
- Take a left at the T-junction onto W End to head out of Stokesley.
- In 0.5 miles, take a right onto Stokesley Road.
- Labman is 1.1 miles down here on the left.

From the North on the A19

- Take the exit to merge onto A174 via the slip road to Whitby/Teesport/Wilton.
- Take the second exit for B1365 towards Hemlington/Coulby Newham.
- Continue on the B1365 towards Stokesley, continuing straight over two roundabouts.
- In 2.3 miles turn right at the sharp left bend towards Howe Hill Bank.
- Take a slight left to continue onto Howe Hill Bank.
- At the T-Junction turn right onto Tanton Road.
- When in Seamer, turn left at the T-junction.
- Labman is just outside Seamer on the right-hand side

Where to Stay



Crathorne Hall Hotel

www.handpickedhotels.co.uk/crathornehall

- 7.5 miles from Labman.

- A grand stately home set in 15 acres of private land on the edge of the North York Moors. The hotel features characteristic and charming rooms, has an onsite restaurant and it is only a stone's throw from Yarm's buzzing town centre.



Hampton by Hilton

Stockton on Tees
www.hilton.com

- 9.5 miles from Labman.

- Set across from the Teesdale Business Park and only minutes from local dining and attractions. The hotel benefits from a fitness centre, EV charging, free WiFi and a free hot breakfast.



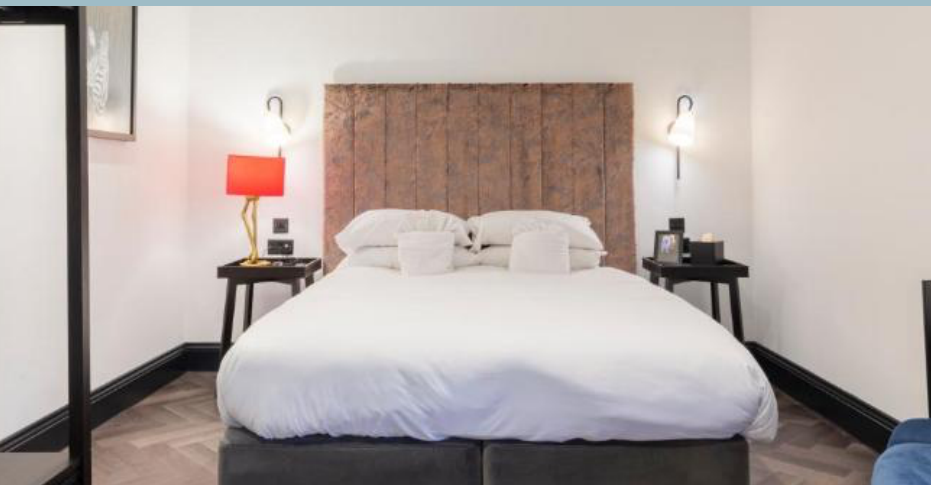
The Treebridge

www.thetreebridgehotel.co.uk

- 4 miles from Labman.

- The Treebridge hotel is a privately owned hotel & has considerable charm and character. The hotel is of fine appearance with history dating back to Georgian times with the property apparently being mentioned in the doomsday book of William the Conqueror c1086. Experience the beautiful surroundings of the Cleveland Hills and North Yorkshire Moors.

Where to Stay



The Wainstones Hotel

<https://www.wainstoneshotel.com/>

- 2 miles from Labman.

Wainstones Hotel is a newly refurbished, character-filled boutique hotel in Great Broughton, North Yorkshire, offering stylish rooms, a bar, restaurant and café with local fare, and serving as a welcoming base for exploring the North York Moors and outdoor adventures.



The Cleveland Tontine

www.theclevelandtontine.com

- 10 miles from Labman.

- A stunning Grade II listed building offering you eclectic boutique rooms. This luxury hotel boasts a delicious menu of locally sourced foods. Easy access from the A19 and A172.



airbnb

'Townhouse in Stokesley'
www.airbnb.co.uk

- 1.7 miles from Labman.

- This quirky house was once a printers in the late 1700's and has been restored to create a fun place to stay in the middle of Stokesley. Features a bath, dedicated workspace and gas fire.



Things to Do

At Labman

We're not shy of the fact that we live in a beautiful part of the world. We have lots of facilities for sporting fun at Labman, whilst there are a wealth of things to do on our doorstep. Ask the Business Support team for further information.



Climbing

If you're a fan of climbing, we have our own climbing wall at Labman HQ. We have spare shoes and chalk for you to borrow.



Squash

We have a squash court at Labman. With dedicated shower and changing facilities, bring along a change of clothing and borrow some of our non-marking shoes and you're very welcome to a game.



Gym

The Labman gym is kitted out with a cable crossover, rowing machine, exercise bike, treadmill and squat rack.

Separately we also have a number of E-Bikes available to use.



Yoga

Experience weekly yoga sessions led by a trained local professional, perfect for all skill levels. Unwind, stretch, and recharge in a calm, welcoming environment.



E-bikes

Explore the area with ease using our free-to-use E-bikes, available to all visitors. Whether you're heading out for a scenic ride or a quick trip, our electric bikes make getting around fun and effortless.



The Labpot

Get creative at our onsite pottery studio, complete with its own potter's wheel and kiln. Whether you're a beginner or experienced, it's a great opportunity to unwind and try your hand at crafting something unique.



Things to Do

In the area



Walking & hiking

The North York Moors are a walkers paradise: take a hike up Roseberry Topping, which offers an unbeatable view of the Tees Valley, or venture up through the forest to Captain Cooks Monument; head further into the moors to the market town of Helmsley, or explore the walks around Osmotherley. Why not visit Dalby forest for some mountain biking?



The Arts

Visit MIMA, Middlesbrough's famous modern art gallery, or check out what's on at the areas many local theatres including Middlesbrough Theatre and The Globe and Arc in Stockton.



The Coast

The breathtaking North East coastline is reason enough to visit this amazing part of the world. Hidden in valleys that drop steeply from the rugged moors, why not visit historic Staithes, of Cook fame, or the winding streets of Bram Stoker's Whitby, or enjoy Fish & Chips in Saltburn or Runswick Bay - all within easy driving distance of Labman.



Local Information



Cash Machines (ATMs)

- Stokesley town centre, Co-op



Local taxis

- Boro Taxis - 01642 222 222



Food Shops

- Co-operative Supermarket, Stokesley - TS9 5ER
- Co-operative Food - Stokesley High Street



Restaurants & pubs

- The Leven, Stokesley
- The Mill, Stokesley
- Chapter's Deli, Stokesley
- The Bay Horse, Great Broughton
- Blackwell Ox, Carlton
- Sutton Arms, Faceby
- Tomahawk Steak House, Potto
- The Blue Bell Inn, Ingleby Arncliffe

See you soon.

LABMAN

For any assistance, please call us on 01642-710-580 (Mon-Fri 9am-5:30pm)