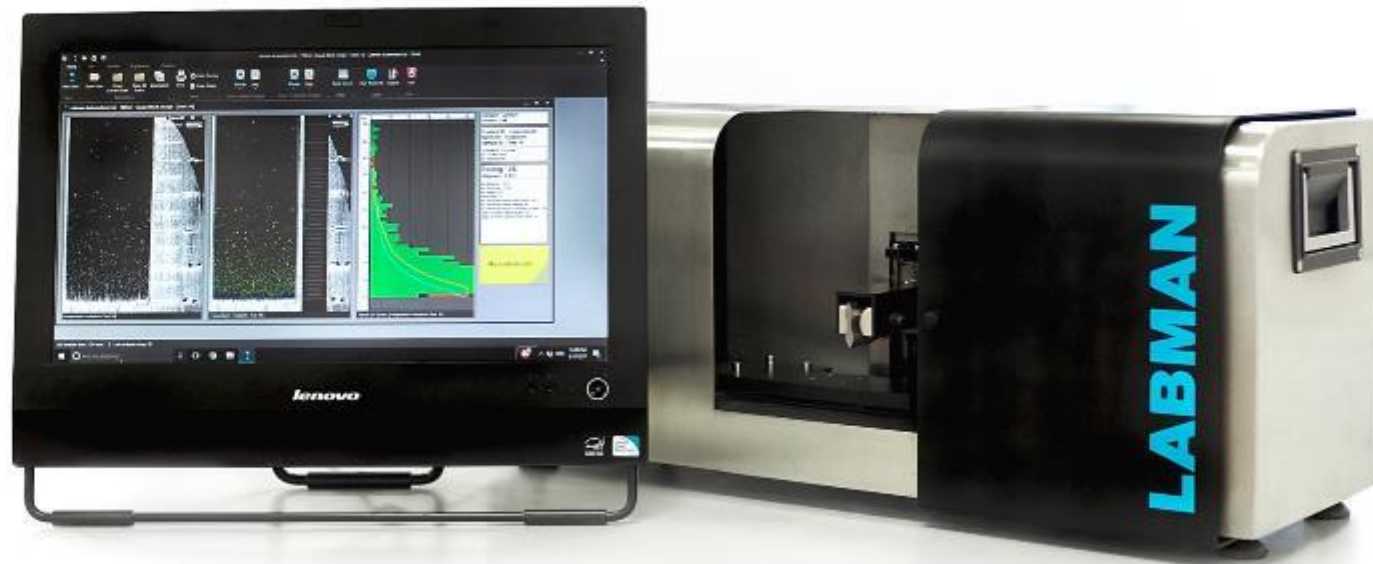


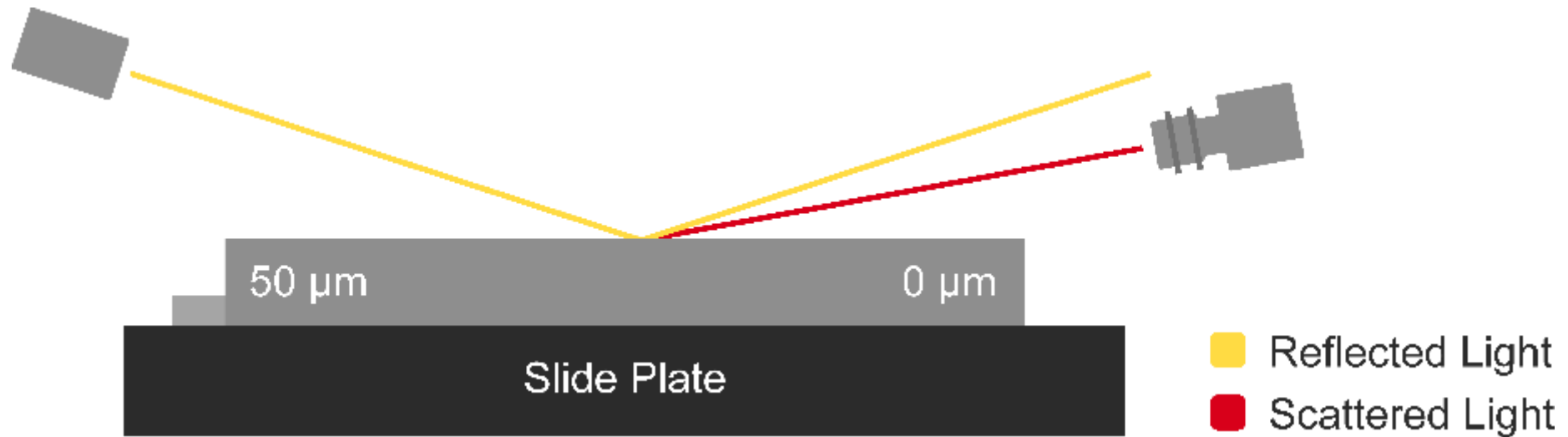
LABMAN

TIDAS Analysis comparisons



Introduction

How TIDAS Works

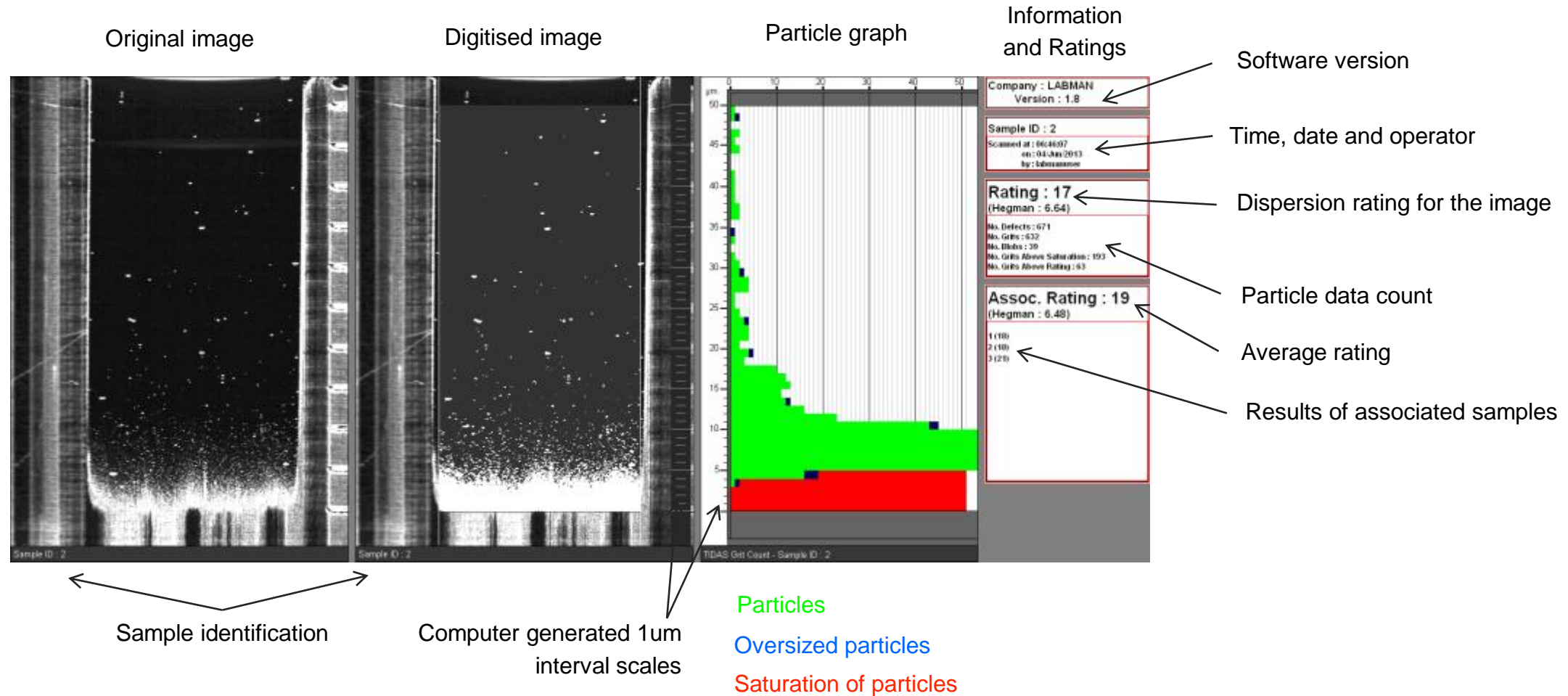


This report contains:

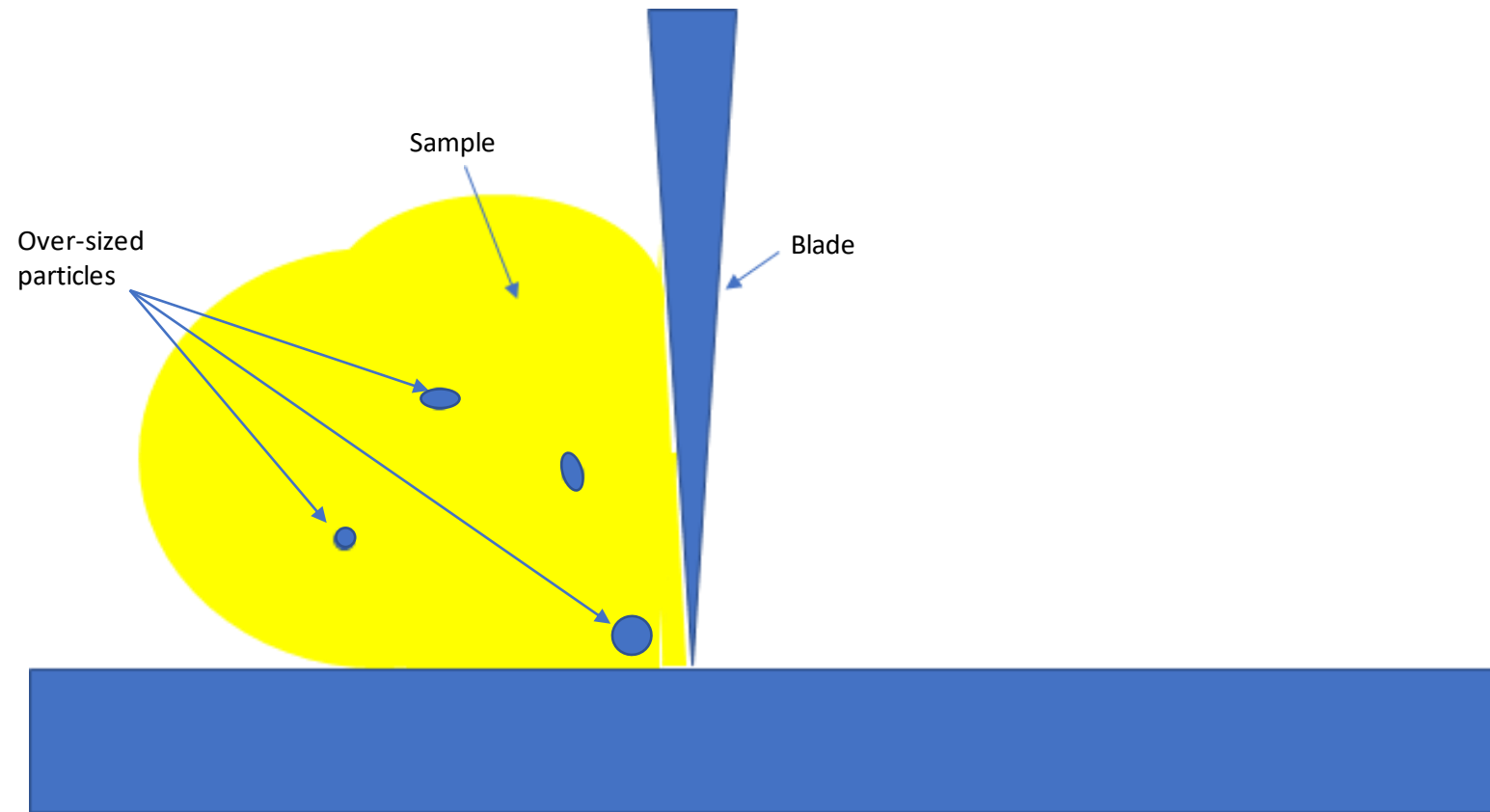
- A guide to understanding your results
- Test scans for all of your samples

Understanding Your Results

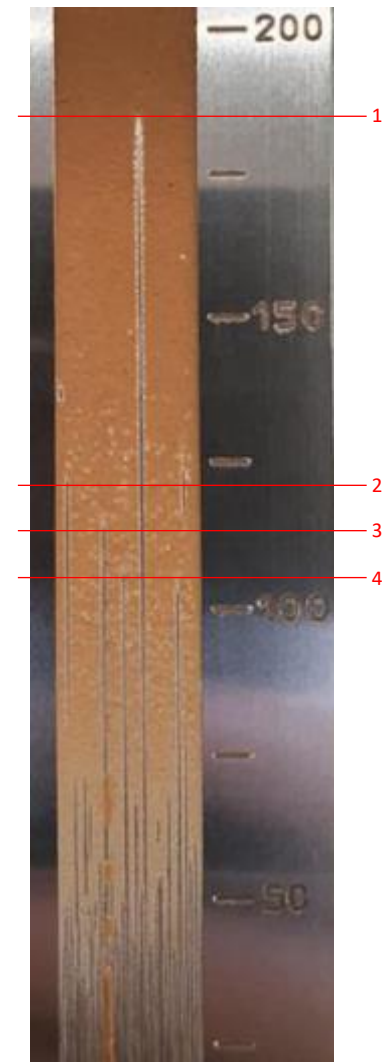
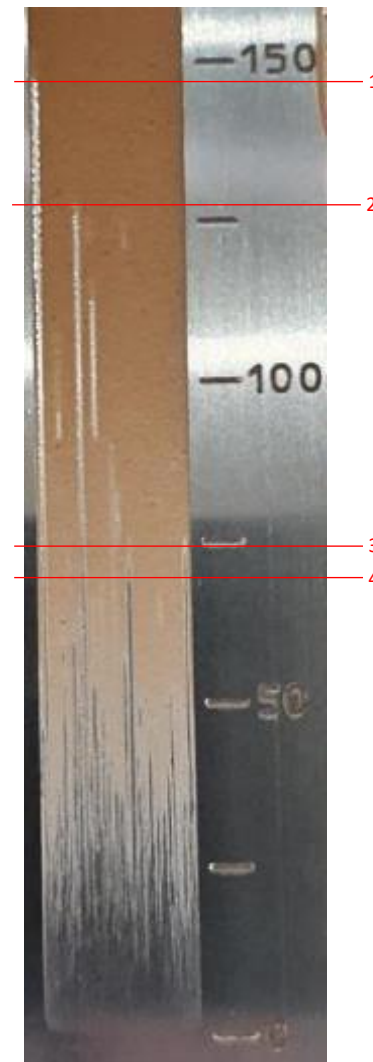
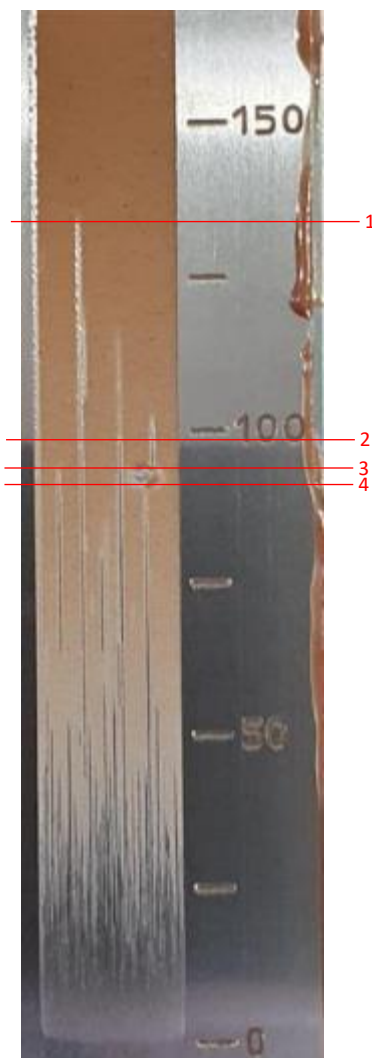
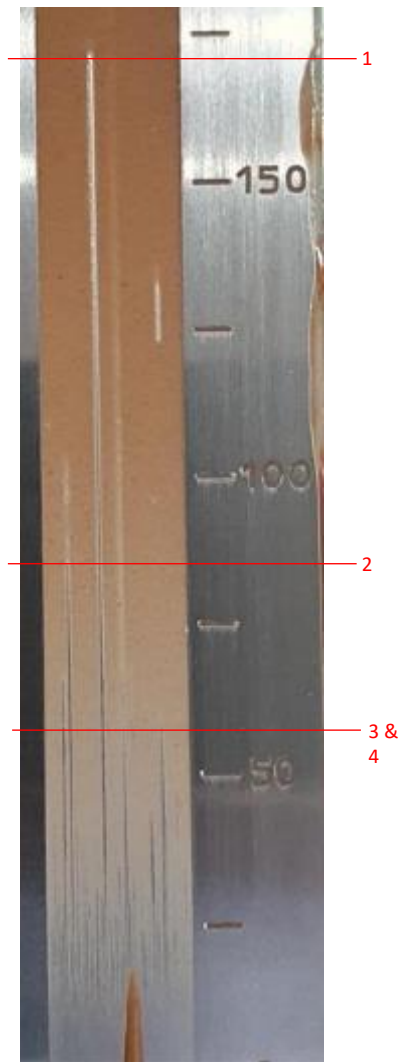
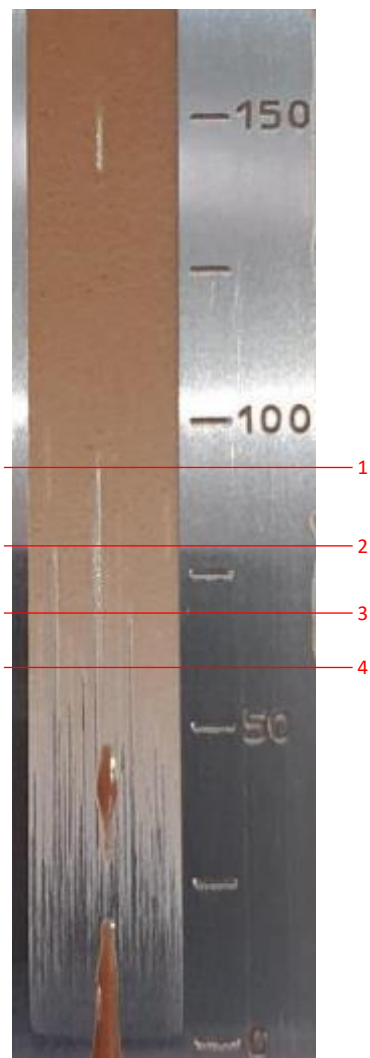
The results of every test are stored electronically.



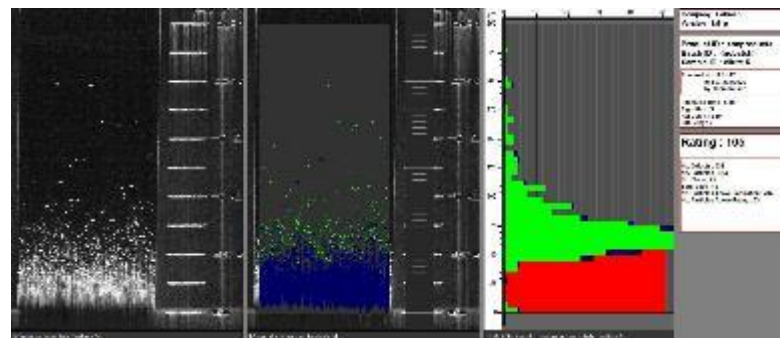
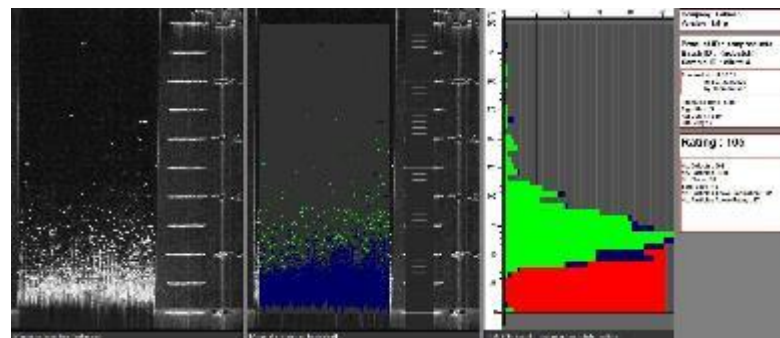
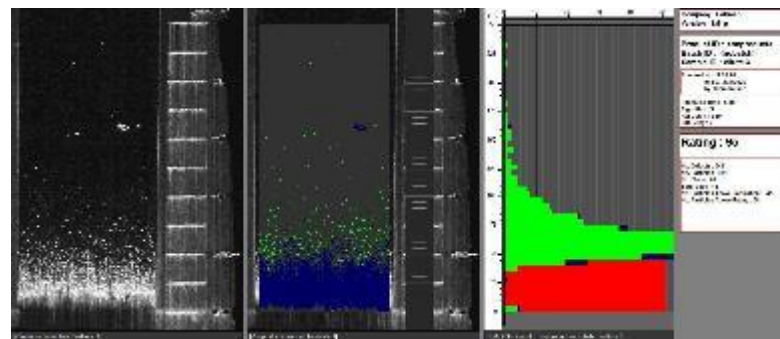
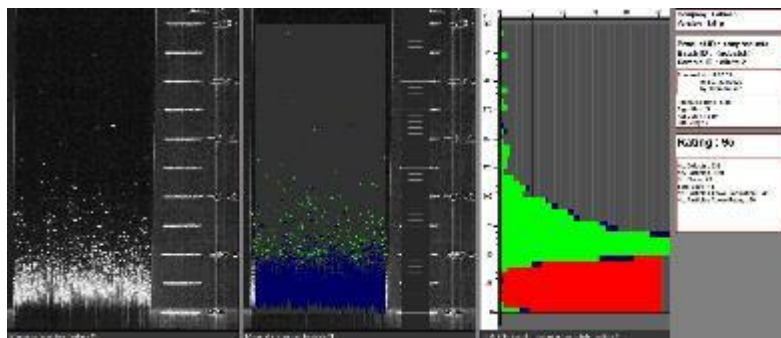
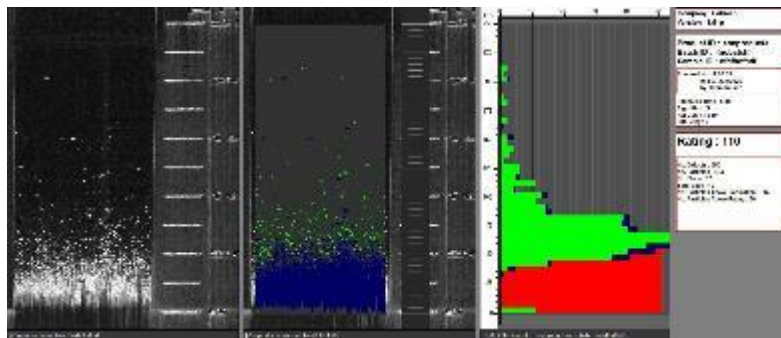
How Scratches are created



Scratch Analysis (chocolate)



Particle Analysis (chocolate)



Results Comparison

Scratch analysis	First	Second	Third	Fourth
Scan 1	94	84	67	58
Scan 2	171	89	55	55
Scan 3	134	99	94	92
Scan 4	146	125	74	69
Scan 5	185	121	113	106
Min	94	84	55	55
Max	185	125	113	106
Average	146	104	81	76
Difference	91	41	58	51

Particle analysis	Rating	100um to 150um	150um to 120um	200um to 250um
Image 1	110	57	7	5
Image 2	95	37	6	3
Image 3	95	38	6	2
Image 4	105	57	5	2
Image 5	105	49	10	2
Min	95	37	5	2
Max	110	57	10	5
Difference	15	20	5	3

LABMAN

www.labmanautomation.com

01642-710-580